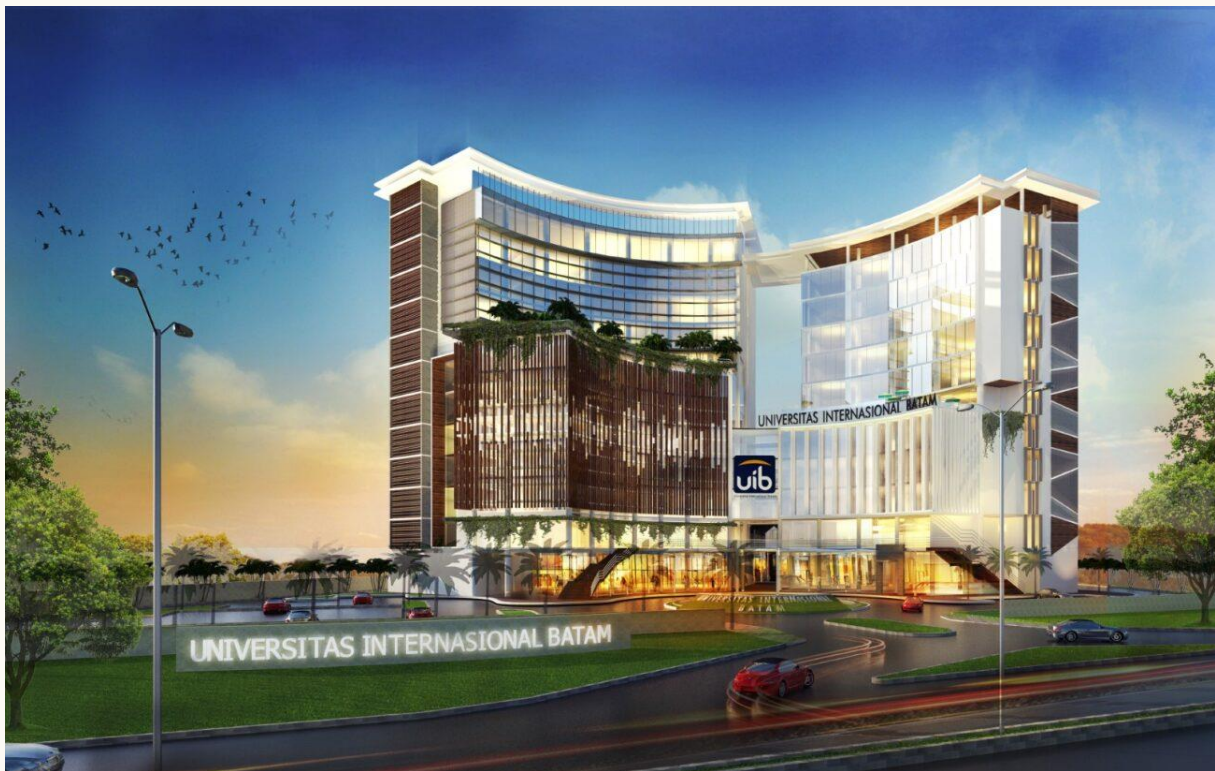




UNIVERSITAS INTERNASIONAL BATAM SUSTAINABILITY REPORT



2023

Table of Contents

❖	Introduction	2
❖	UIB Vision and Mission	4
❖	Sustainability Aspect in UIB	5
✓	Setting and Infrastructure	6
✓	Energy and Climate Change	7
✓	Waste	8
✓	Water	9
✓	Transportation	10
✓	Education and Research	11

Introduction

History



Batam International University (UIB) was founded in 2000 based on the Decree of the Minister of National Education of the Republic of Indonesia Number 160/D/O/2000. UIB is a private university managed by the Indonesian Chinese Marga Foundation (YMTI) as a form of concern for education for the people of Batam and its surroundings.

At the early days, UIB campus was located in the Engku Putri area, Batam Center, as a place for studies activities. In 2003, UIB had a campus located on Gajah Mada Street, Baloi-Sei Ladi, Batam. UIB strategy development is divided into several stages. The first stage is infrastructure development and the second stage is focused on increasing capacity. Capacity development carried out since 2007 in the Five Year Strategic Plan is also carried out in several stages. Capacity development in 2007-2011 began with strengthening UIB governance. Then, in 2010-2013, UIB focused on developing efficiency and relevance. In 2012-2016 development was directed at achieving international quality in accordance with UIB's vision and mission. In 2019, UIB as an institution achieved B Accreditation and was included in the 5% of the Best

Universities in Indonesia. Apart from that, UIB also managed to achieve first place as the best private university by LLDIKTI (Private Higher Education Service Institute) 10th Region (West Sumatra, Riau, Jambi, and Riau Islands Province).

Currently, UIB has 5 Faculties and 11 Study Programs which have been accredited by BAN-PT and LAM Education. 2 study programs accredited Excellent, 2 study programs accredited A, 2 study programs accredited Very Good, 3 study programs accredited B, and 2 study programs accredited Good. Through international programs, UIB has also succeeded in establishing collaboration with 32 leading universities in Southeast Asia, Asia and Europe.

Based on the history of this development, it illustrates that UIB has developed dynamically externally and internally in the last 20 years. UIB shows progressive growth to become one of the best private universities in implementing the Tri Dharma of Higher Education to improve Indonesian human resources who have human, academic, morality and independence values to compete globally.

Introduction

UIB Logo

The UIB logo generally has the meaning of commitment, politeness, caring for others and the environment (Committed, Humble, and Caring). Each of these meanings can be elaborated as follows:

1. Committed means that UIB is devoting knowledge to humanity without distinction, applying knowledge for the welfare of humanity, learning throughout life and improving quality (academic and non-academic) in a sustainable manner.
2. Polite (Humble) means that UIB is full of sincerity in serving, full of friendship and familiarity in interacting, confident, efficient and effective in carrying out tasks.
3. Caring for Others and the Environment (Caring) means that UIB does the best for other people and the environment, empathizes with other people's conditions and is friendly towards the environment.



Cakrawala Dunia means that UIB has a vision of a world class university and a university that is multiracial and cultural. UIB also develops and applies knowledge and dedication for humanity without limits.



Clockwise and Cascading describes the time dimension of life, today is better than the past, the future is better than the present (continuous quality improvement). This also symbolizes UIB's development towards a world class university and lifelong learning.



The location of the UIB Typography symbolizes that UIB's work is always based on faith and humility under the guidance of God the Creator. UIB is also committed to implementing knowledge for Human Welfare

The composition of the Navy Blue Box symbolizes self-confidence and dignity (confidence), friendship and familiarity (friendly), as well as beauty and care for the environment (aesthetic).

Vision & Mission

Vision

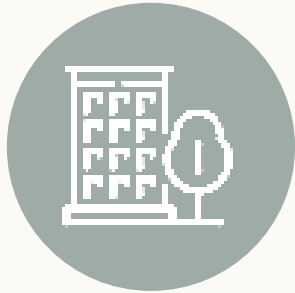
To be a university with international quality standard that produces graduates, sciences, technology and arts that can meet global dynamic changes.



Mission

1. To continuously implement comprehensive education according to international quality standard.
2. To develop analytical and innovative science, technology and arts through research.
3. To conduct humane society services.
4. To carry out accountable and transparent governance.

Sustainability Aspects



**SETTING AND
INFRASTRUCTURE**



**ENERGY AND
CLIMATE CHANGE**



WASTE



WATER



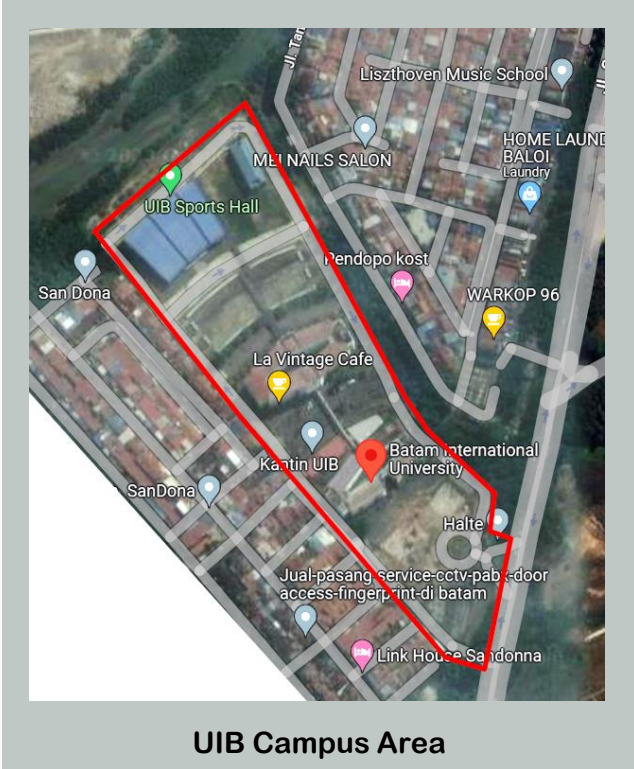
TRANSPORTATION



**EDUCATION AND
RESEARCH**



SETTING AND INFRASTRUCTURE



Universitas Internasional Batam has **53,967 m²** (5.39 Ha) total area

80% 80.21% (4.3 Ha) of campus area is open space

23% 23.28% (1.2 Ha) of campus area is planted with plants and trees

URB UIB campus located in urban area

4k There are 4,191 students within 11 study programs in University

There are 4 buildings with the total area of **27,634.88 m²**

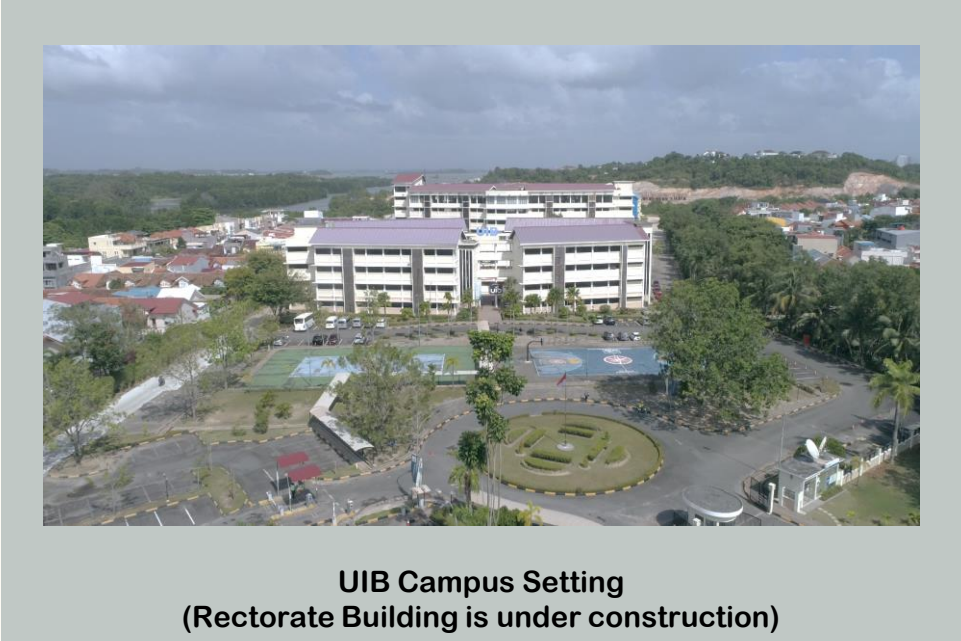
A Building

B Building

S Building (Sport Hall)

Dormitory

Rectorate Building is Under Construction



UIB Campus Setting
(Rectorate Building is under construction)



ENERGY AND CLIMATE CHANGE

UIB is trying to start becoming an energy efficient campus and contribute to reducing the impact of global warming. Several programs that have been implemented at UIB include the use of electronics and energy efficient spatial planning as well as the application of green building principles down to the smallest elements on the campus area.



Open Office Layout for Energy Efficiency

- ✓ The open office layout allows for the use of shared lights and air conditioning
- ✓ We are using LED-Light in office and some classrooms for low-energy usage
- ✓ In library, we are using 100% natural light at day time except when the weather is cloudy



Using Natural Light in Library

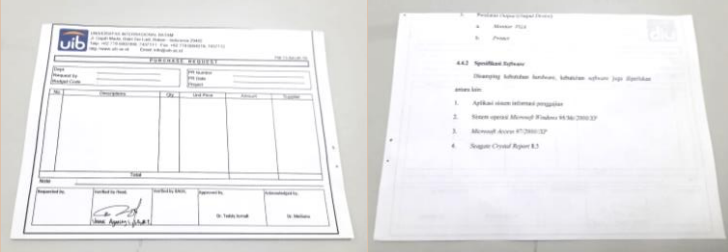


Plants in the Office

- ✓ UIB is a smoke-free campus as a form of concern for health and global warming
- ✓ Plants inside rooms for green energy sources
- ✓ As a small-area campus and short distance between each building, making UIB as a low carbon footprint campus as all mobilities inside campus area are done by walking



WASTE



Reuse Paper for Printing

REDUCE PAPER-WASTE AND REUSE PAPER

UIB has a policy where printed documents for review must use used paper. Another policy for reducing paper waste and reusing paper is for all employee forms (leave, permission, sick, purchase request, etc.) to be printed using waste paper.



Sorting Organic and Inorganic Waste



Waste Water Filtering in the Canteen Kitchen

WASTE MANAGEMENT

Waste management has been carried out by separating organic and non-organic waste. Organic waste is selected to make ECO Enzyme. Existing organic waste from leaves is used for the compost making process.

Wastewater filtering in the kitchen has been carried out. Where the filtered water flows to a reservoir while the waste is collected for the decomposition process to become fertilizer.



WATER



Water Conservation - River

WATER CONSERVATION

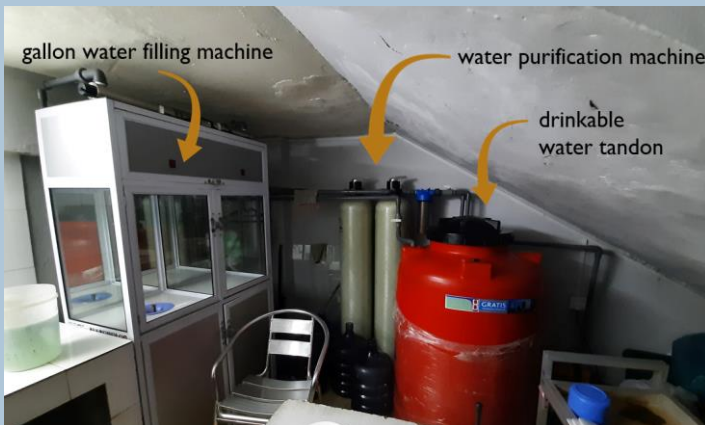
The UIB campus area borders the river on the north and west sides which functions as a water conservation area.



Water Efficient Appliance -
One-tap sink (left) and urinal (right)

WATER EFFICIENT APPLIANCE USAGE

We are using one-tap sink and urinal (in men toilet) to reduce water usage in toilet.



Consumption of Treated Water –
Water Purification Machine



Consumption of Treated Water –
Drinking Water Fountain

TREATED WATER CONSUME

To reduce purchasing water from outside parties while reducing the use of plastic drinking bottles, UIB processes raw water into ready-to-drink water which is distributed to all campus areas, including work spaces, canteens, communal spaces and corridors.



TRANSPORTATION



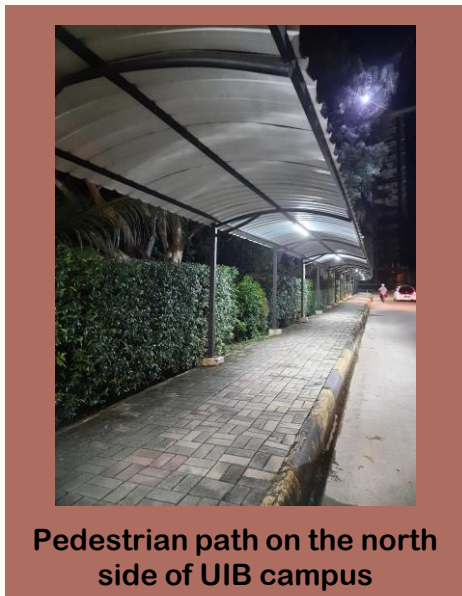
Parking area of UIB



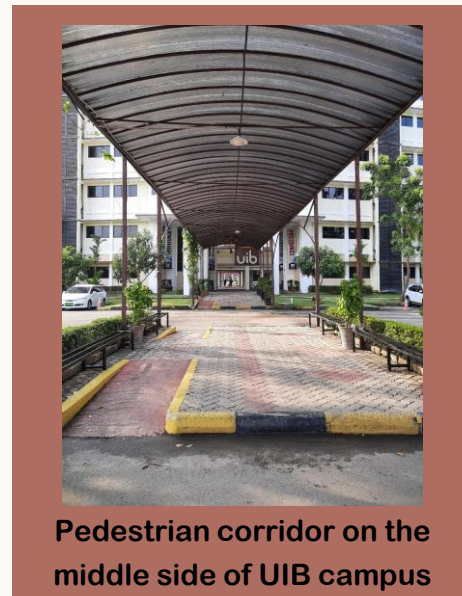
Motorbike parking area of UIB

PARKING AREA

The UIB parking area located in the middle and back area of campus. The total parking area is 4,780 m² or 8.86% of the total campus area.



Pedestrian path on the north side of UIB campus



Pedestrian corridor on the middle side of UIB campus

PEDESTRIAN PATH

On the north and middle sides of the UIB campus, there are pedestrian paths that facilitate pedestrians from the front of the campus to the inside. There is also a pedestrian path that connects the front building (Building A) to the back building (sports hall). This pedestrian path is facilitated with a roof and lights, and has a disabled-friendly ramp.



EDUCATION AND RESEARCH

COURSE AND RESEARCH

About 22% (106 out of 485 courses) of courses in UIB related to Sustainability and SDGs.



UIB has published 7 publications on sustainability and 4 research in review from the total of 573 publication

PROGRAM AND ACTIVITIES

339 cultural activities on campus organized by the University

339

10

10 university sustainability program(s) with international collaborations

14 sustainability community services project organized and/ or involving students

14

7

7 sustainability-related startups

399

399 events related to environment and sustainability hosted or organized by the University (e.g. conferences, workshops, awareness raising, practical training, etc.)



Education
Law Expo (LAPO): Art and Intellectual Property



Cultural Activities
UIB Talent Show 2023